

See Plat Book p. 71
see F. 196-246
this book up 145
see "D" - p. 34-35

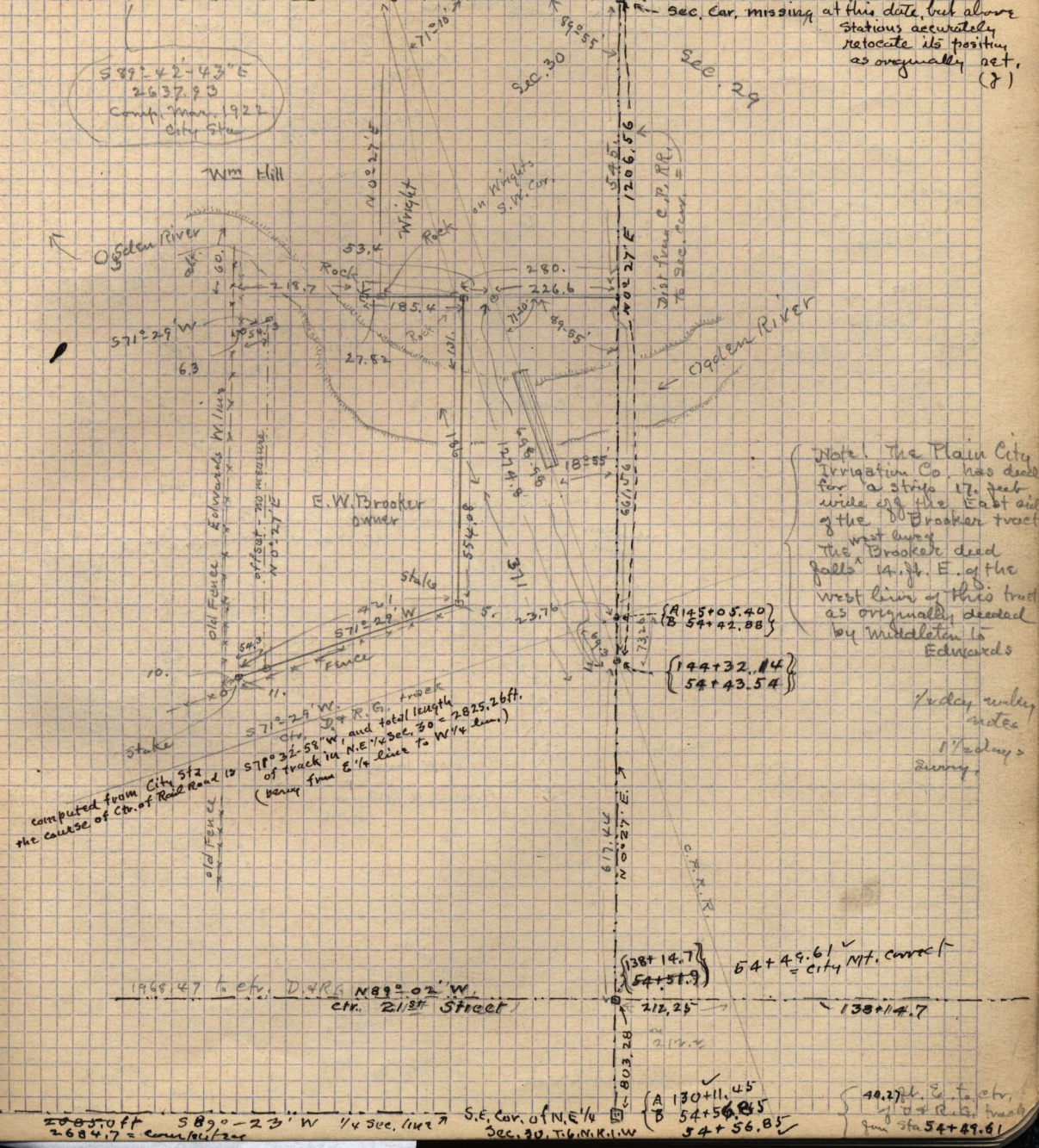
meas. Jan'y 1888
N 89° 38' W Sec. line

Wm Hill, E. W. Brooker - W. Hill - F. Annis J. Wright
Dec. 2-1910
in N.E. 1/4 Sec. 30 T.6-N. R. 1. W.

(56+38.6 A)
54+32.68 B

Sec. Car. missing at this date but above
Stations accurately
relocate its position
as originally set.
(J)

589° 42' - 43" E
2637.93
Comp. Mar. 1922
City Sta



Note: The Plain City
Irrigation Co. has deed
for a strip 17 1/2 feet
wide on the East side
of the Brooker tract
the west corner
The Brooker deed
falls 14 ft. E. of the
west line of this tract
as originally deeded
by Middleton to
Edwards

Friday morning
notes
1 1/2 days =
Sunday

computed from City Sta
the course of Ctr. of Road is S 71° 32' 58" W, and total length
of track in N.E. 1/4 Sec. 30 = 2825.26 ft.
(bearing from E 1/4 line to W 1/4 line)

1968.47 to ctr. D. & R. G. track
ctr. 21 1/2' Street

(138+14.7)
54+51.9

54+49.61 ✓
city MT. corner ↑

49.27 ft. E. to ctr.
of D & R. track
from sta 54+49.61

2085.0 ft S 89° - 23' W 1/4 Sec. line
2684.7 = computed

S.E. Cor. of N.E. 1/4
Sec. 30, T.6 N. R. 1. W.

(A 130+11.45
B 54+56.85
54+56.85 ✓